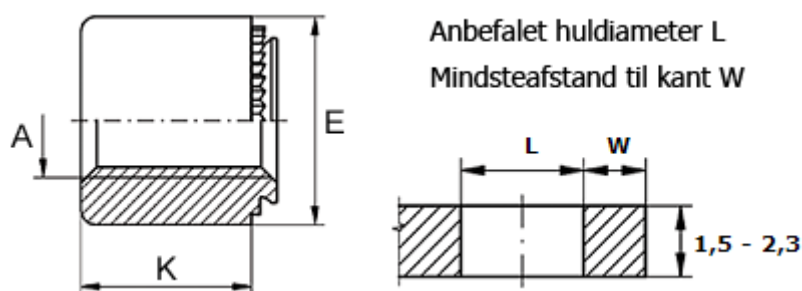


Article number: 12505800050100

Description: KLEE-coil 505 800 050.100  
M5 Hardened, zinc-pl. & chr. yellow

## Measures



|                                 |              |
|---------------------------------|--------------|
| Female thread A                 | = M5         |
| Height K                        | = 5          |
| Min distance to edge            | = 4.0        |
| Outer diameter E                | = 9          |
| Plate thickness                 | = 0.8 to 1.0 |
| Recommended bore diameter +0.05 | = 6.00       |